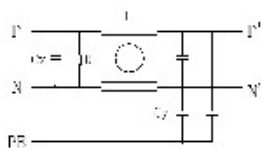




典型电路图
typical electrical schematic



单相滤波器 1-phase filter

■ 产品概述 (Product Introduction)

1. 具有高衰减性能的通用滤波器
2. 具有良好的共模差模滤波性能
3. 广泛应用于开关电源, UPS, 变频逆变等场合
4. 超过50A一定要确保接地良好, 否则有电击危险
5. 医用型的滤波器后缀为A

1. General purpose EMI filter with high attenuation performance
2. High common-mode and differential-mode attenuation
3. Widely used in switching power, UPS, inverter, etc.
4. Exceed 50A must ensure that the ground is good, otherwise there is a risk of electric shock
5. Medical type filter suffix for A

■ 技术参数 (Technical Data)

额定电压: 250 VAC
 工作频率: 0~60Hz
 额定电流: 3A~200A
 高压试验: P/N-E 2000VAC/2sec 0P-N 1100VDC/2sec
 温度范围: -25℃~85℃ (25/85/21)
 设计依据: IEC/EN 60939
 典型滤波频率: 150kHz~30MHz

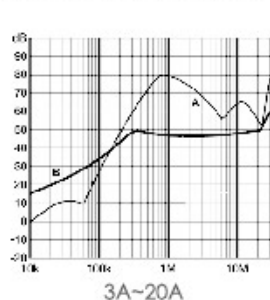
Rated voltage: 250 VAC
 Operating frequency: 0~60Hz
 Rated current: 3A~200A
 High potential test voltage: 0P/N-E 2000VAC/2sec 0P-N 1100VDC/2sec
 Temperature range: -25℃~85℃ (25/85/21)
 Design corresponding to: IEC/EN 60939
 Typical work frequency: 150kHz~30MHz

■ 典型应用 (Typical Applications)

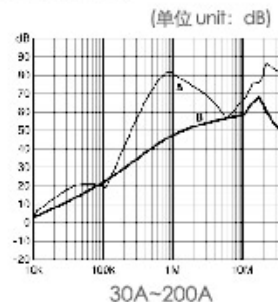
1. 电气和电子设备
2. 消费品
3. 家庭设备
4. 电子数据处理设备
5. 办公自动化和数据通信设备
6. 电磁环境恶劣且需要高性能滤波滤波器

Electrical and electronic equipment
 Consumer goods
 Household equipment
 Electronic data processing equipment
 Office automation and datacom equipment
 Various noisy applications requiring high filter performance

■ 输入滤波器插入损耗 (Input Filter Attenuation)





A:50N/50Ω sym, B:50N/50Ω asym



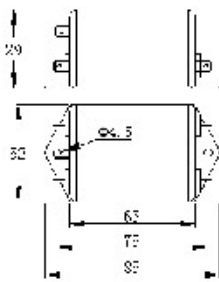
30A~200A

■ 滤波器选型表 (Filter Selection Table)

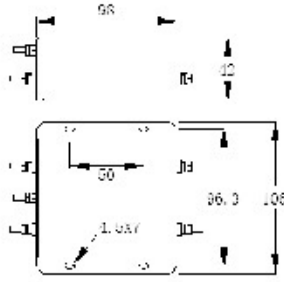
滤波器型号 Filter type		额定电流 Rated current @40°C [A]	漏电流 Leakage current @230VAC/50Hz [mA]		能量损耗 Power loss @25°C/50Hz [W]	端子类型 Connector type
通用型 Universal filter	医用型 Medical filter		通用型 Universal filter	医用型 Medical filter		
RFD2B3N01	RFD2B3N01A	3	0.87	0.074	2.3	
RFD2B6N01	RFD2B6N01A	6	0.87	0.074	3.2	
RFD2B10N01	RFD2B10N01A	10	0.87	0.074	3.8	
RFD2B16N01	RFD2B16N01A	16	0.87	0.074	4.7	
RFD2B20N01	RFD2B20N01A	20	0.87	0.074	5.6	
RFD2B30N05	RFD2B30N05A	30	0.87	0.074	8.5	
RFD2B50N05	RFD2B50N05A	50	1.75	0.074	13.3	
RFD2B100N05	RFD2B100N05A	100	1.75	0.074	30.2	
RFD2B200N05	RFD2B200N05A	200	3.5	0.074	46.9	

滤波器

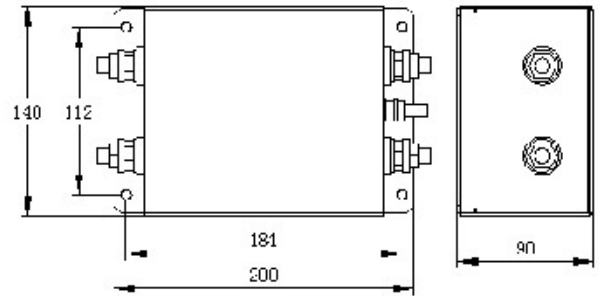
■ 产品尺寸图 (Product Size)



3A~20A



30A



200A

(单位 unit: mm)